

SHIELDVIEW : AIR DEFENSE C4I SYSTEM

EXTENDED AIR DEFENSE MISSIONS

AIR COMMAND AND CONTROL MISSIONS

BATTLEFIELD SURVEILLANCE AND COORDINATION MISSIONS

COMBINED COMMAND AND CONTROL MISSIONS




ThalesRaytheonSystems

SHIELDVIEW : AIR DEFENSE C4I SYSTEM

The ShieldView solution

ShieldView is a state-of-the-art, scalable, open-architecture command and control solution for Air Defense C4I. ShieldView provides relevant capabilities to operate 24/7 protection of a zone, territory or country against all airborne threats. The system coordinates all networked ground to air Very SHORt RAnge Defence Systems (VSHORADS), SHORt RAnge Defence Systems (SHORADS), and medium or long-range weapon systems.

A network enabled and interoperable architecture are the key ShieldView design drivers. ShieldView provides operators with enhanced capabilities to select the appropriate response to any airborne threat in a timely manner while improving seamless integration with other forces (NATO/US/European forces) with a view to increasing airspace security and integrity of actions.

Network-enabling your Air Defense

ShieldView is able to integrate all existing and future weapon systems regardless of their origin. Thanks to its embedded "plug & fight" capability, Shield-View enables customers to optimize their legacy systems as well as providing additional capability.

Unleash Weapon System Power while protecting friendly assets

ShieldView enables operators to keep track of all air assets in real time to ensure that weapon systems are prepared to riposte immediately. Providing a Single Integrated Air Picture and Common situation awareness for all ShieldView users, it enables users to:

- Avoid fratricide kills as assets are clearly identified and protected
- Select the right response (short, medium or long-range missiles)



Modular, Scalable and Flexible Solution

Designed as a very open and customizable solution, ShieldView can be easily adapted to any operational environment and customized to accommodate existing equipment. With a high level of availability, ShieldView is designed to meet all types of operational requirements:

- Fixed to high mobile configurations
- All theatres of operation, providing vital support to projected forces
- Deployment adjusted to the type of operation (from peace keeping to high intensity)
- Point defense & zone defense operations

ShieldView's Operational Functions

Surveillance

- In co-ordination with Air Forces, production and distribution of a tactical air situation, using weapon systems radar assets as well as gapfillers, medium and long range radars, and surveillance information received through tactical data links (L16, L11, LLAPI) from Navy, AEW & UAV
- Classification and Identification
- Comprehensive situation display

Fire coordination

- Threat evaluation and weapons allocation
- Real time weapon cueing and optimization of firing of all anti-air weapon systems
- Engagement monitoring

3rd Dimension Coordination / Friend protection

- Automated distribution of air space rules as defined by Air Force/Air Defense
- Mission monitoring and protection of friendly airborne assets (collision detection, airspace structure compliance, fratricide risk alert warnings, weapon system cease/hold fire)

Embedded Training

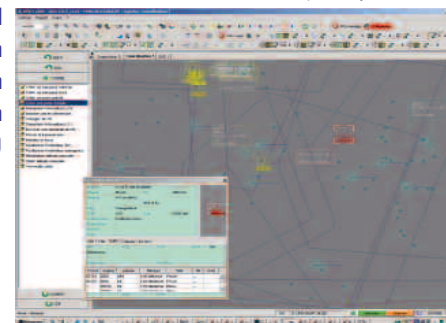
- On the job training capability based on simulation
- Academy training – simulation featuring system operational environment
- Simulation featuring ADC4I operational environment

Technical features

- Open architecture
- State-of-the-Art HMI
- Modern languages (C++, Java)
- Use of COTS products
- GIS integration and management

Typical performances

- Area of interest : 500 km x 500 km
- 1000 tracks
- 100+ weapon systems



ThalesRaytheonSystems
1801 Hughes Drive
P.O. Box 34055
Fullerton, California
92834 - 9455 USA
Tel.: +1.714 446 3118
Fax: +1.714 446 3260

ThalesRaytheonSystems
1, avenue Carnot
91883 Massy Cedex France
Tel.: +33 (0)1 69 75 50 00
Fax: +33 (0)1 69 75 51 00